



Power to Perform

Rental Services



GE imagination at work

Why Rent?

- Temporary power need
- Back-fill during maintenance
- Emergency response
- Maximize process uptime
- Maximize asset utilization
- Avoid equipment obsolescence
- Avoid capital investment
- Summer cooling - Winter heating



Application

- Overhauls
- Peak load
- Back-up
- Test
- Emergency

Features

- Island mode
- Grid synchronised
- Automatic start-up
- 50/60Hz-Operation
- Medium Voltage
- Support

Generators

- 20-2000kVA
- 50/ 60 Hz
- Twin Packs
- Integrated Fuel tank
- Environmentally certified

Power Stations

- 22,8 MW
- 50/ 60 Hz
- Gas operation
- Diesel operation

Accessories

- Transformers
- Cables
- Loadresistors
- Distribution boards
- External fuel tanks

Watercoolers

- 50-1100kW
- aircooled
- +18 to -15°C
- Pumps

Airhandler

- 25-500KW
- Airflow from 2000m³ - 50.000m³/h
- 1000Pa
- Electric heating

Large Power Range

GE Energy's rental equipment was specifically designed for the rental industry. Individual components are compatible and can be combined to form a desired configuration.

We rent a wide range of power equipment with flexible rental durations. As well as the necessary accessories for local and world-wide applications.

Together with our technical specialists for rental supply, we offer you solutions that can be implemented quickly, easily and on short notice.

Site surveys are offered to assist you with alternative solutions for all applications.

A Multitude of Applications

GE Energy's rental solutions are ideal for the industrial or commercial sectors, as well as for chemical or pharmaceutical companies in need of a temporary solution for product enhancement or productivity increases.

Power plants/utility companies use generators in order to do planned maintenance or upgrades on their installed equipment. Hospitals, banks and computer server locations also count on our technology as an efficient and flexible means of back-up support during works, emergencies or for short-term capacity expansion.

Our equipment is also used in the entertainment industry for shows, concerts, outdoor sports events or new product launches. Especially for these events, it is critical to have the right power and customer friendly temperatures available at all times. These events are now more frequently set up in places where power supply or temperature control is virtually impossible without mobile equipment, such as a green field open-air festival or a new car presentation in the desert.

Available Globally

365 days a year | 24 hours a day | 7 days a week



GE Energy

GE Energy created its rental business in order to satisfy the increasing need for efficient mobile power and cooling equipment for temporary applications.

Backed by the power of GE, we can build on over 100 years of experience in the power generation industry.

GE is a company with global reach, proven processes to drive efficiency and a history of innovation.

Mobile Gas-fired Power Plant:

- 22 MW mobile gas turbine for gas and fuel oil operation
- 1 MW mobile gas engine in 40' ISO-Container

Balance of Plant Accessories:

- Transformers; flexible low and medium voltage cables
- Grid-Generator Switchboards; Distribution panels and extension cables

Equipment for Power Supply

Our equipment can be used for an extensive range of power needs.

Flexibility of operation is reflected in automatic start-up for stand-by application, synchronising between generators, grid synchronisation and operation with 60Hz instead of 50Hz.

Web-based monitoring and control options are also available.



600 kVA ISO Container



TM2500 Power Plant on Wheels

Power Generation Equipment Overview

Diesel Generators

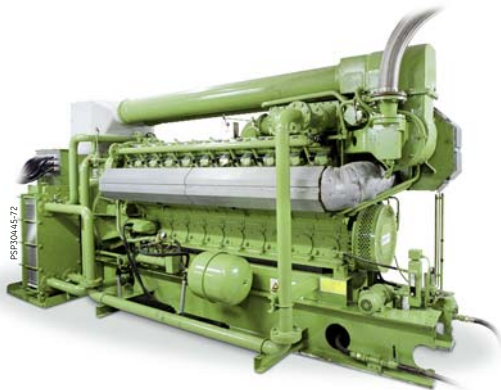
kVA	Length	Width	Height	Weight	Tank	Boxes	dB(A) at 7 m	Cables Number	Type
45	2.90	1.15	1.94	2.12	340	0100-0/1	67.7	1	5 G 16 mm ²
75	2.90	1.15	1.94	2.39	600	0020-1	66.3	1	5 G 16 mm ²
135	3.57	1.15	1.94	2.81	766	0100-2/0	70.1	1	5 G 16 mm ²
135	3.57	1.15	1.94	2.81	766	0120-2	70.1	1	5 G 16 mm ²
200	4.25	1.32	2.14	3.98	1200	0230-3	70.7	4	1 x 240 mm ²
250	4.25	1.32	2.14	4.11	1200	0230-3	70.7	4	1 x 240 mm ²
300	5.10	2.04	2.47	8.98	1040	none	58.1	4	1 x 240 mm ²
300	4.76	1.44	2.70	5.28	700	none	71	4	1 x 240 mm ²
400	5.10	2.04	2.47	9.39	1040	none	63.9	4	1 x 240 mm ²
400	4.76	1.44	2.70	5.66	700	none	71	4	1 x 240 mm ²
500	5.47	2.13	2.47	10.51	1300	none	65.6	7	1 x 240 mm ²
500	5.31	1.74	2.95	6.51	800	none	70	7	1 x 240 mm ²
Twin 700	6.00	2.44	2.70	13.50	2000	none	69		Cam-/Powerlock
800	6.10	2.44	2.59	13.98	2154	none	72.9	11	1 x 240 mm ²
1250	12.20	2.44	2.90	25.00	6000	none	73	14	1 x 240 mm ²
1650	12.20	2.44	2.90	27.97	6000	none	74	18	1 x 240 mm ²
2000	12.10	2.44	2.90	28.60	4000	none	73.6	18	1 x 240 mm ²

Natural Gas Generators

— Jenbacher J320 1048kW

Natural Gas or Diesel Generators

— TM2500 Gas Turbine 22MW



Jenbacher Natural Gas
Reciprocating Engine



Twin packs 2 x 300kw 20' ISO
Latest design mains distribution centre

Application range for our Chillers and Air-handlers:

- Standard from +18°C to – 12°C, other temperatures on request
- Ambient temperatures to 42°C
- Air-handlers up to a room temperature of ca. 3°C

Accessories:

- Feedpumps, Connecting Hoses, Dividers and Adapters

Equipment for Chilled Water Supply and Air-conditioning

Mobile chillers from 50kW up to 1.100kW are available to provide process cooling and air-conditioning.

All equipment is air-cooled and fit for outdoor installation. Noise emission is reduced through the application of silent fans.

For air-conditioning with chilled water or also for heating with warm water, air handlers are available. Electrical heating is also a possibility with built-in heating elements.



AHU200 Airhandler



WC50 Chiller



500mm ducting up to 1000mm dia

Temperature Control Equipment Overview

kVA	Length	Width	Height	Weight	E-connection	dB (A)	Cables Number	Type	Fuse
5 FC	1.39	0.23	0.55	32		47			
7 FC	1.59	0.23	0.55	40		52			
12 FC	0.54	0.37	1.75	60		51			
25 AH	1.22	0.78	2.15	0.18	32A CEE				
50 AH	1.52	0.78	2.25	0.38	32A CEE				
100 AH	2.45	2.35	2.48	2.20	125A CEE				
200 AH	3.02	2.45	2.58	3.20	2x125A CEE				
500 AH	3.03	2.45	2.60	4.50	Busbar				
50 WC	2.80	1.20	1.90	1.20	63A CEE	46	1	5 G 16 mm ²	63 A
100 WC	3.00	2.435	2.65	2.52	125A CEE	53	1	5 G 35 mm ²	125 A
200 WC	5.00	2.435	2.65	3.73	Busbar	57	4	1 x 50 mm ²	160 A
300 WC	5.00	2.435	2.65	4.82	Busbar	58	4	1 x 70 mm ²	250 A
500 WC	6.03	2.435	2.65	7.10	Busbar	62	4	1 x 120 mm ²	400 A
500 WC	5.85	2.33	2.56	7.00	Busbar	68	4	1 x 120 mm ²	400 A
1100 WC	9.99	2.33	2.56	10.80	Busbar	71	4	1 x 240 mm ²	650 A
50 WC	3.40	1.23	2.40	2.20	63 A CEE	52			
100 WC	3.80	1.23	2.60	2.90	125A CEE	55			
240 WC	4.00	2.46	2.60	5.00	Busbar	63			



Fluid in line pumps 1500 l/ min



Typical application
2 x 20.000m³ air handlers



Typical application
2 x 350kw chillers

For Rental locations or information, please contact us

GE Energy – UK
Littlebrook Business Park
Littlebrook Manor Way
Dartford, England DA1 5PZ
T: +44 (0) 845 601 3350
F: +44 (0) 1322 293138
24/7: +44 (0) 845 601 3350

GE Energy – Ireland
Toughers Business Park,
Unit 1C
Newhall, Naas
County Kildare, Ireland
T: +353 (0) 45 440 300
F: +353 (0) 45 440 399
24/7: +353 (0) 86 600 50 50

GE Energy – GmbH
Europe
Barbara Strasse 62
46282 Dorsten, Germany
T: +49 (0) 2362 60 59 31
F: +49 (0) 2362 60 59 59
24/7: +49 (0) 2362 60 590



WORLDWIDE PARTNER

gepower.com/rentals

